

# Bogen A

Klebefläche

4

5

9

Klebefläche

Mitte Stoffbruch

4 5 9

FL

Klebefläche

Klebefläche

Mit

9

Mitte Stoffbruch  
(ohne 12 und 13)

1

2

3

7

10

11

12

13

14

15

16

1

2

6

Klebefläche

Klebefläche

Mitte Stoffbruch

6

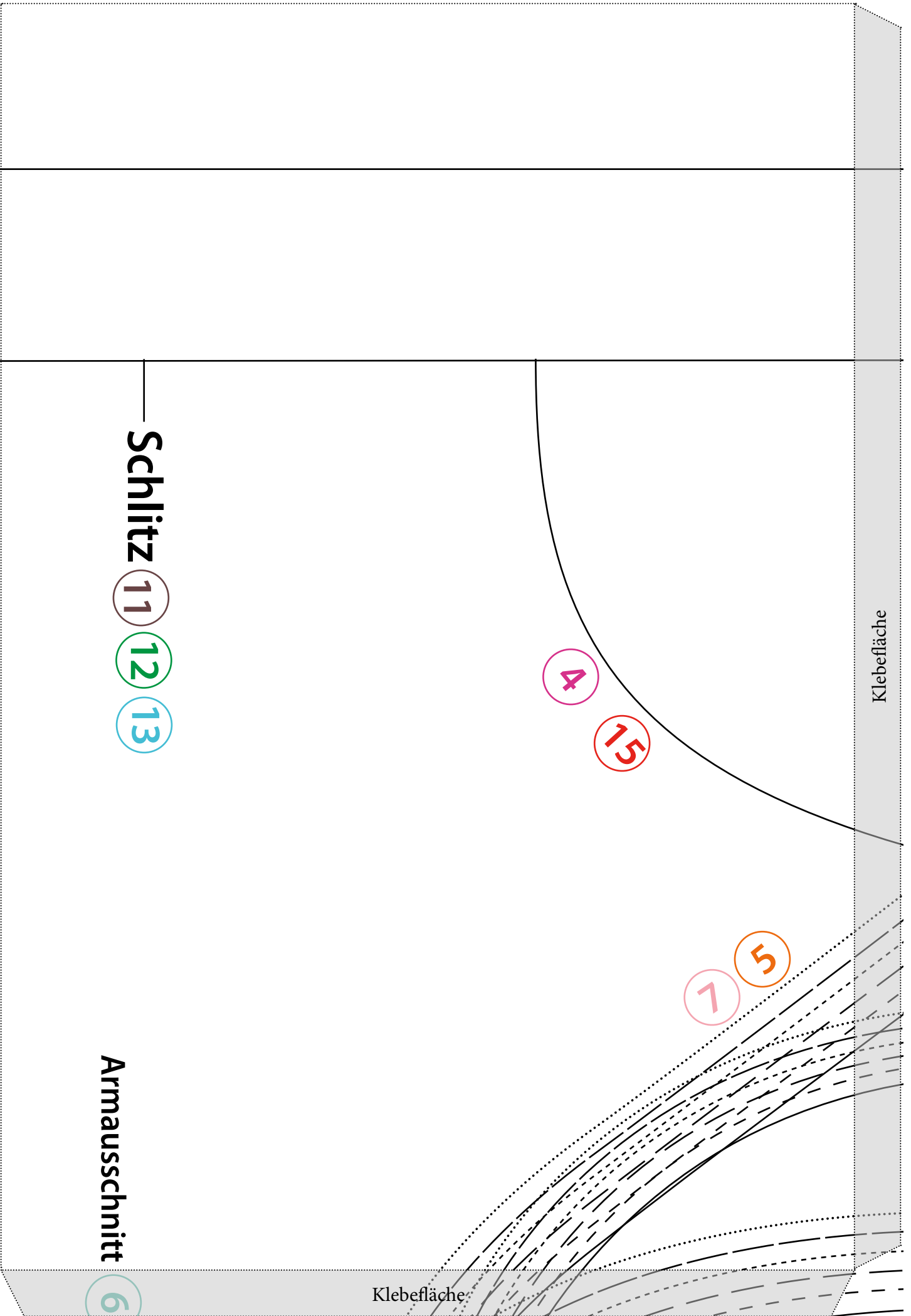
- 2 3 4 5 7 9 10 11 12 13 14 15 16

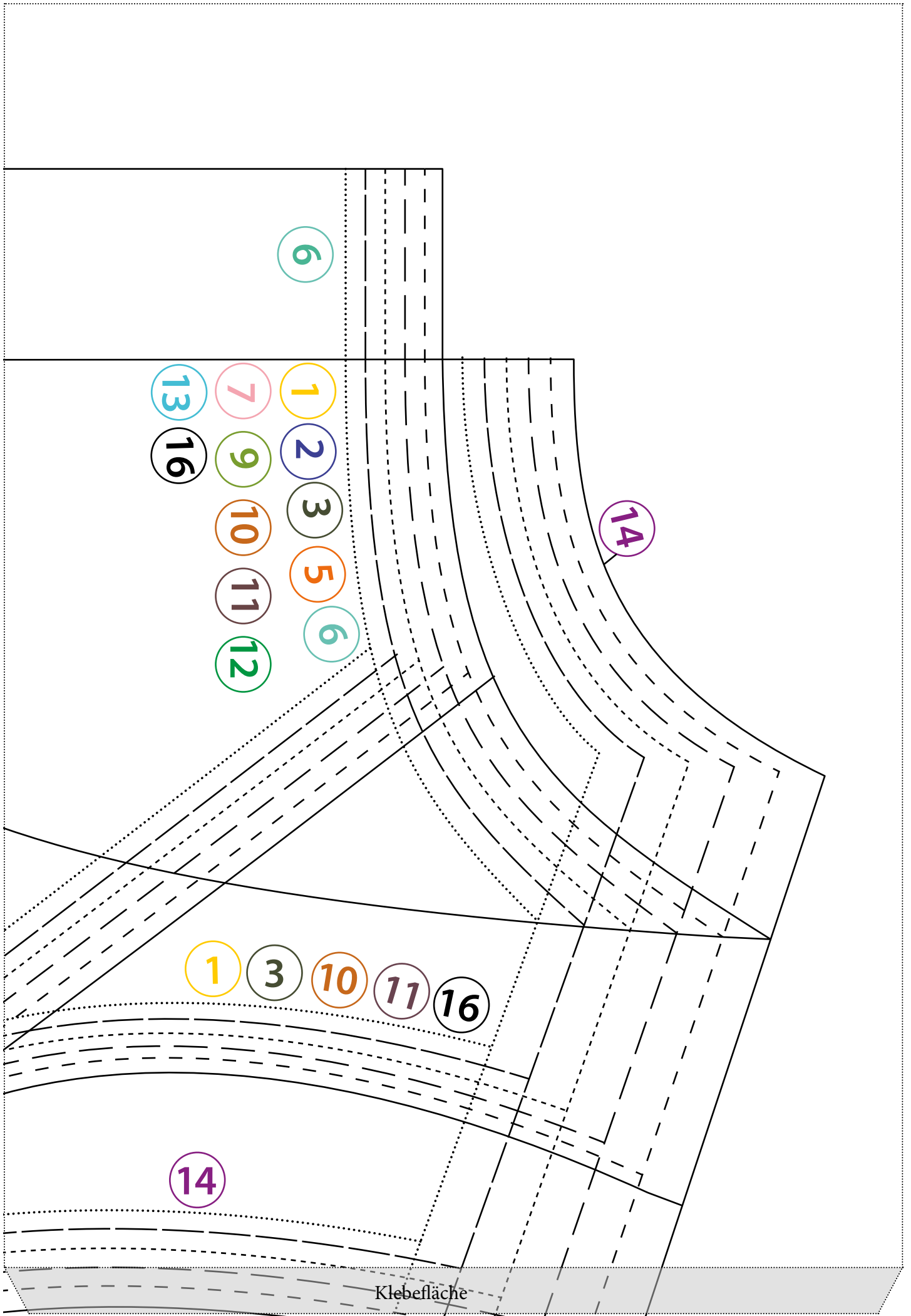
RÜCKWÄRTIGES  
OBERTEIL × 1

14

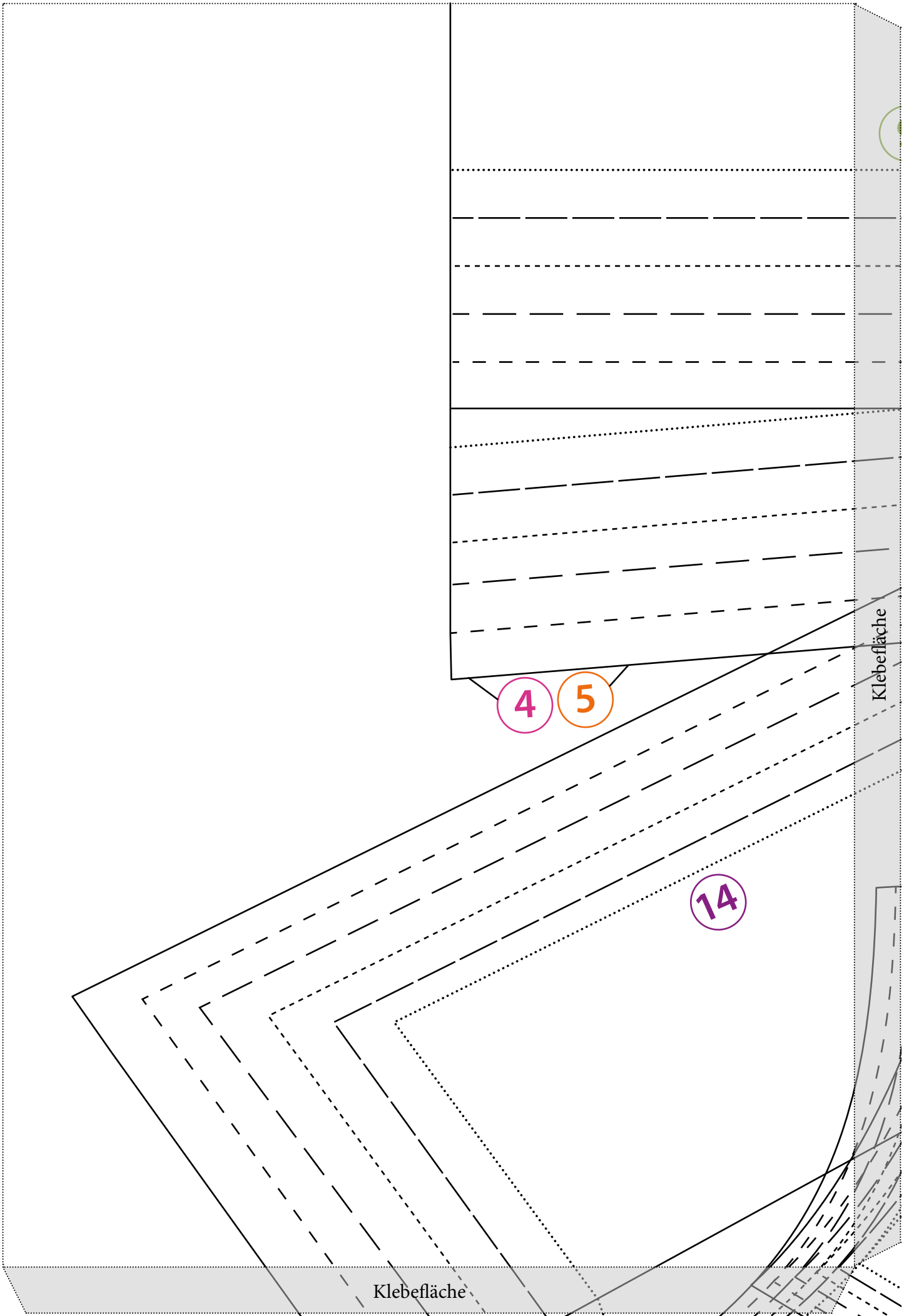
Klebefläche

Klebefläche





Klebefläche



Klebefläche

4

5

14

Klebefläche

9

6

- |   |    |    |    |
|---|----|----|----|
| 2 | 4  | 5  | 7  |
| 9 | 12 | 13 | 15 |

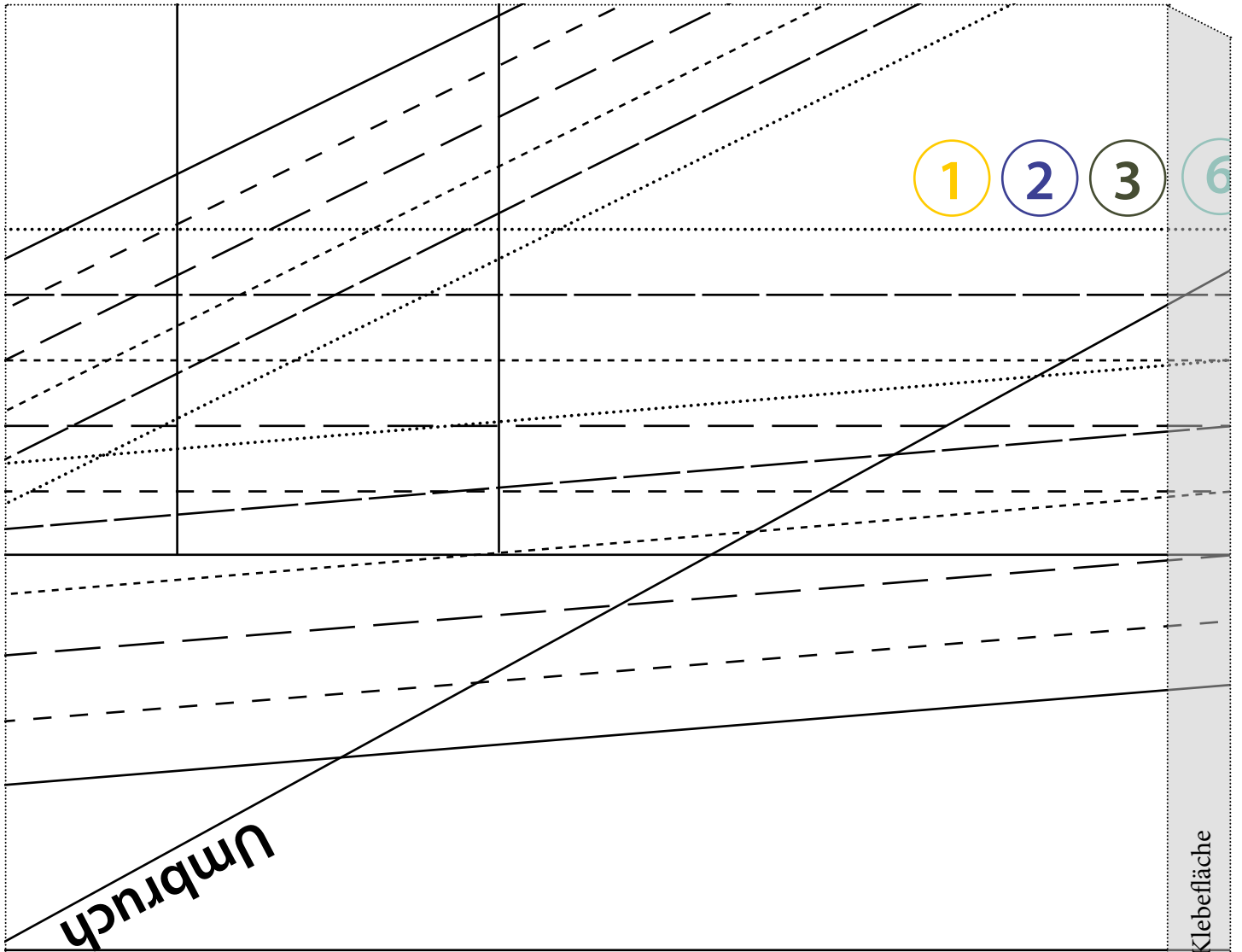
- 1 3 10 11 16

Klebefläche

Klebefläche

Fasche





Umbbruch

Mitte Stoffbruch

6

Mitte Stoffbruch  
(ohne 9)

1 2 3 4 5 7

Klebefläche

Tasche

ERES

Klebefläche

x1

x2

6 7 9 10 11 12 13 14 15 16

4 5

14

Klebefläche

9 10 11 12 13 15 16

16

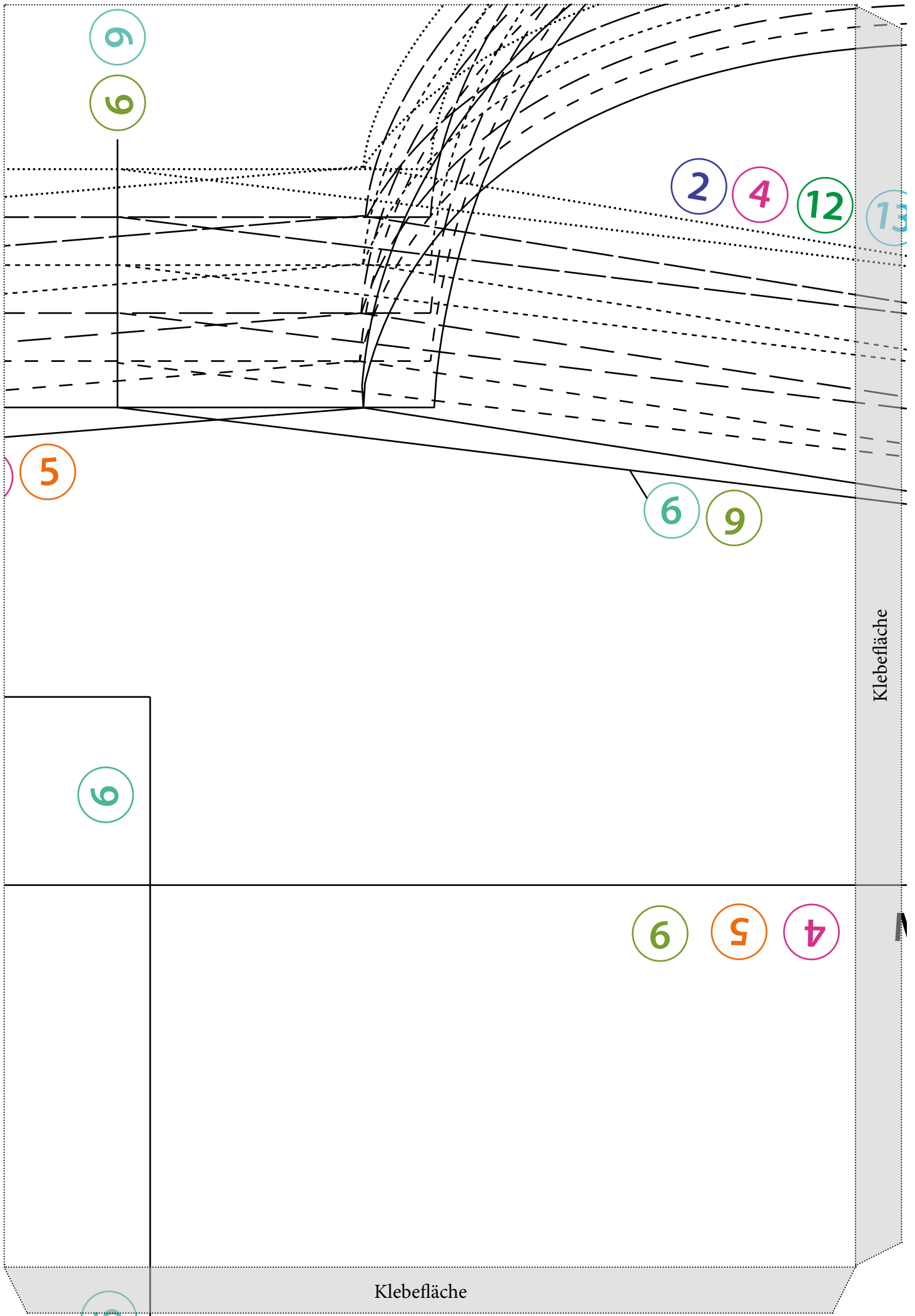
15

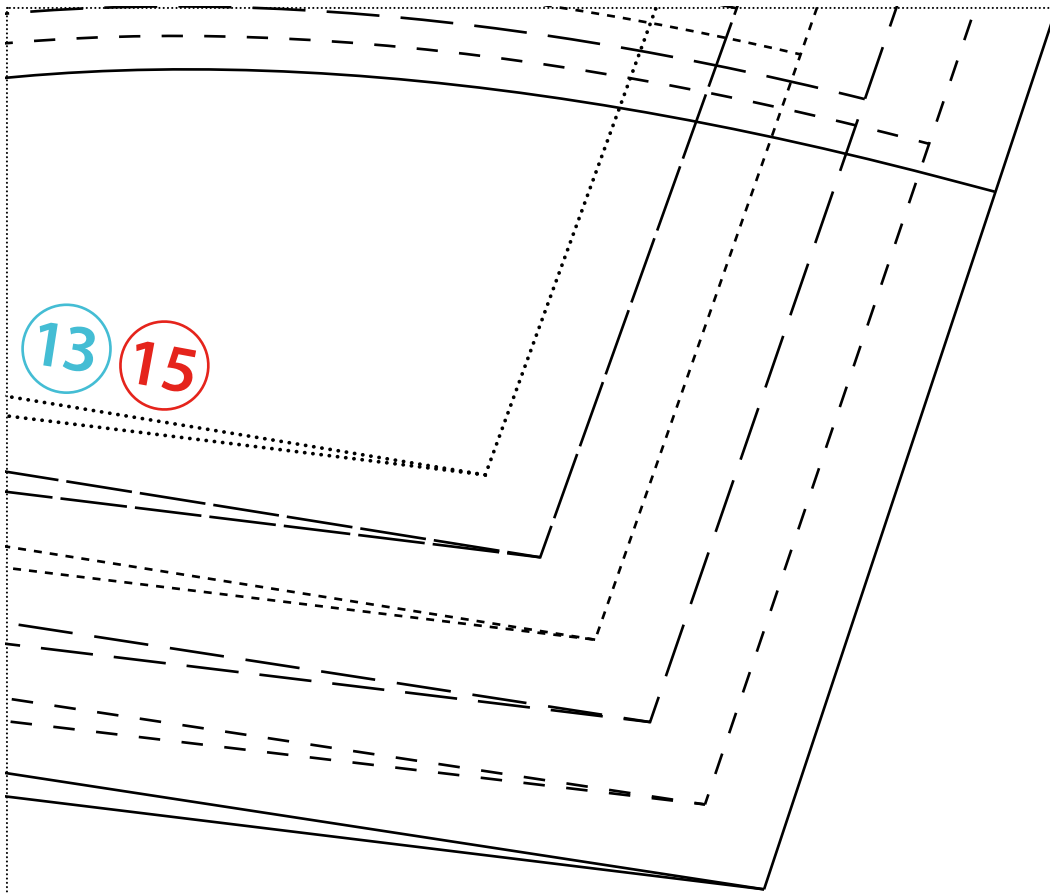
14

13

12

Klebefläche



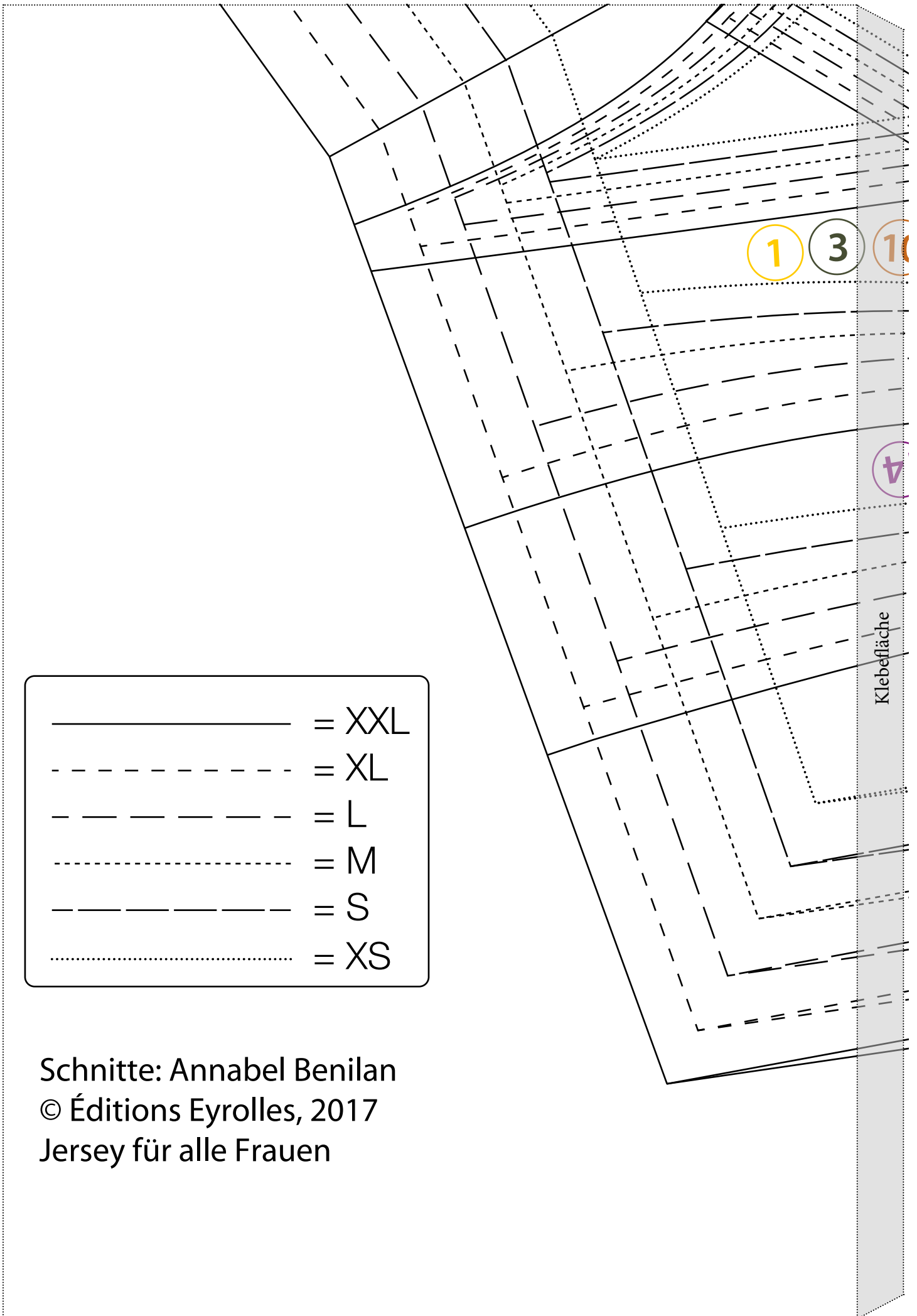


**Mitte Stoffbruch**  
(ohne 9)

9

Klebefläche

15



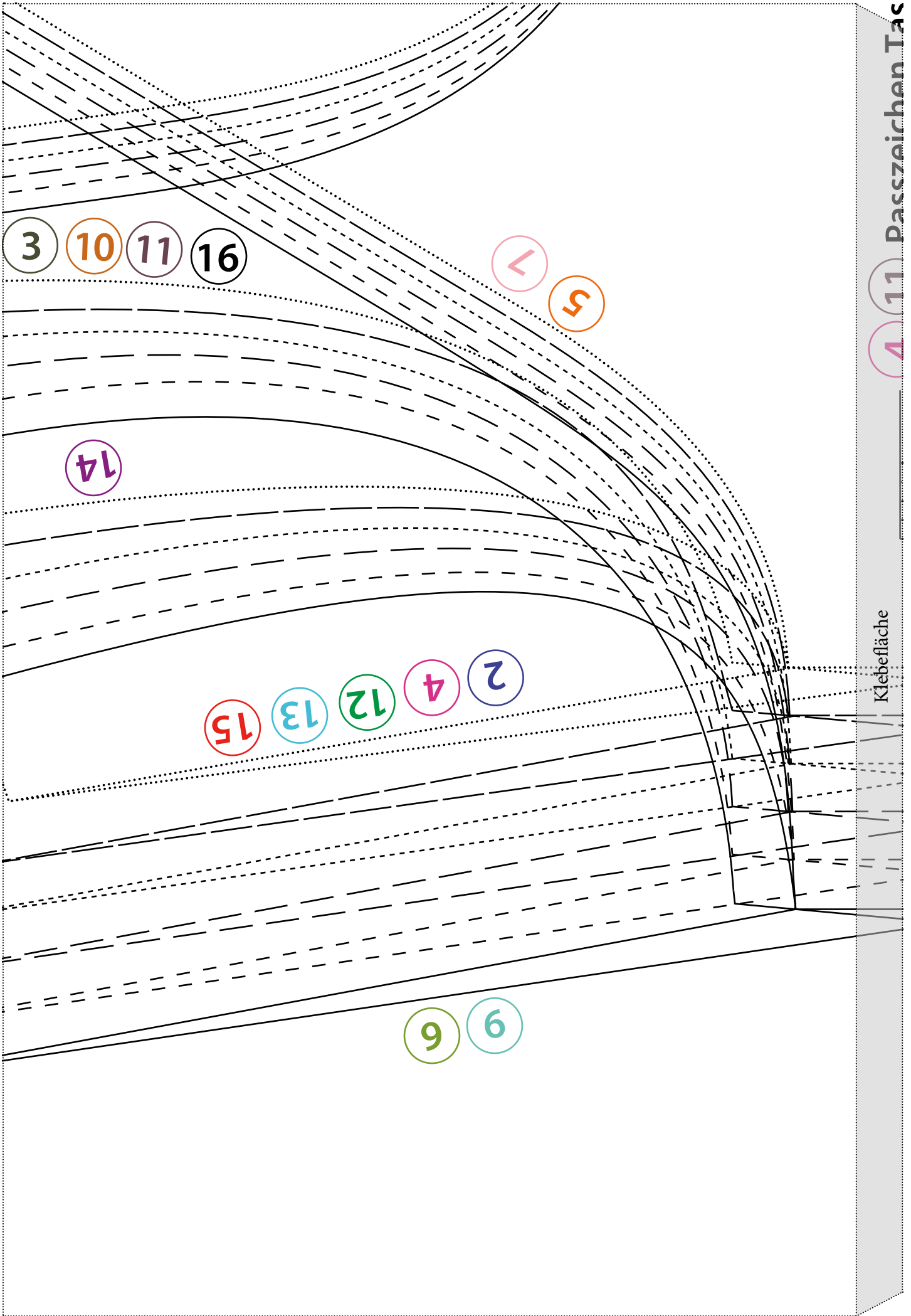
1 3 10

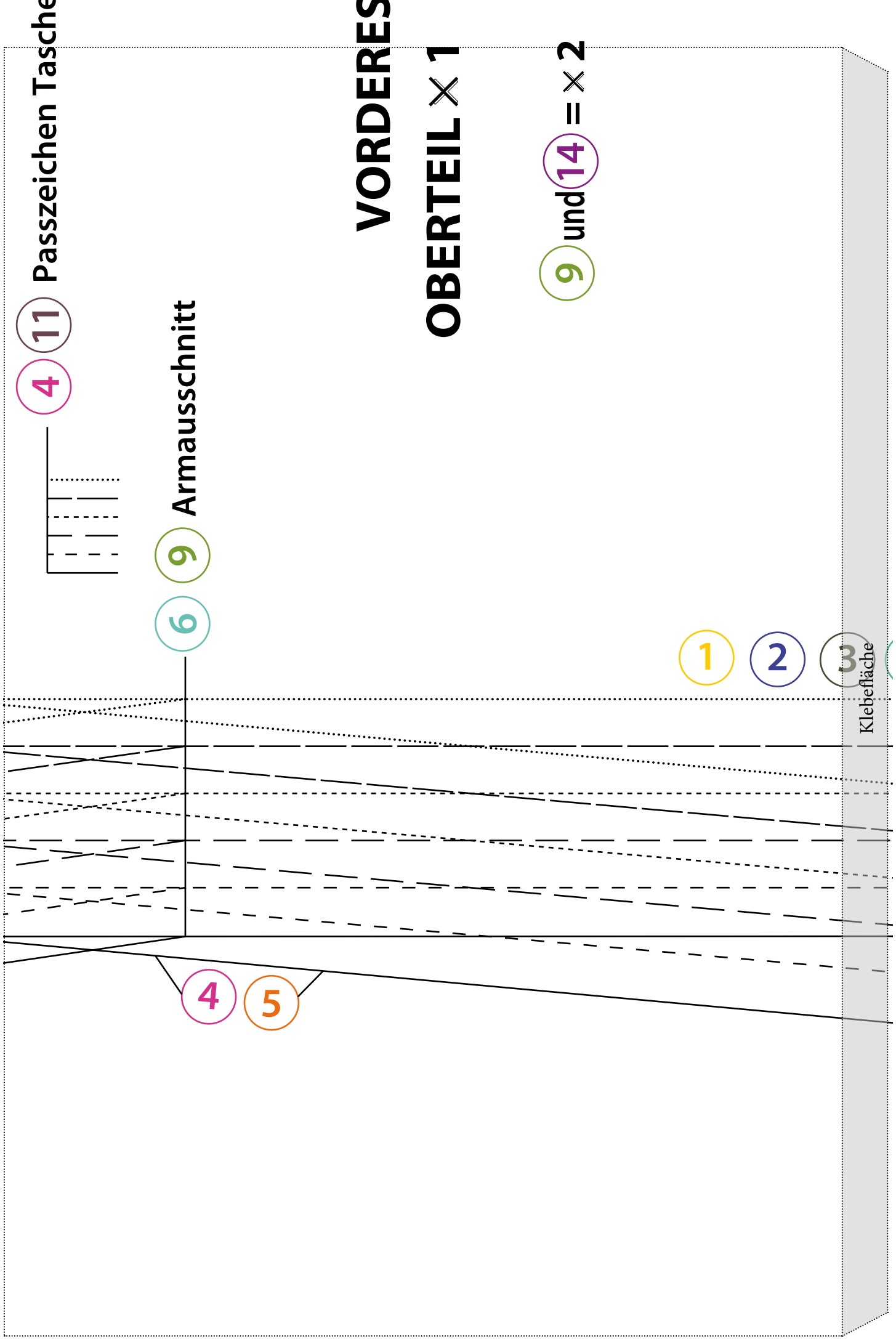
v

Klebefläche

- = XXL
- - - = XL
- - - - = L
- - - - - = M
- . - . - . = S
- ..... = XS

Schnitte: Annabel Benilan  
© Éditions Eyrolles, 2017  
Jersey für alle Frauen





Passzeichen Tasche

4 11

9 Armausschnitt

6

4

5

1

2

3

Klebefläche

VORDERES

OBERTEIL × 1

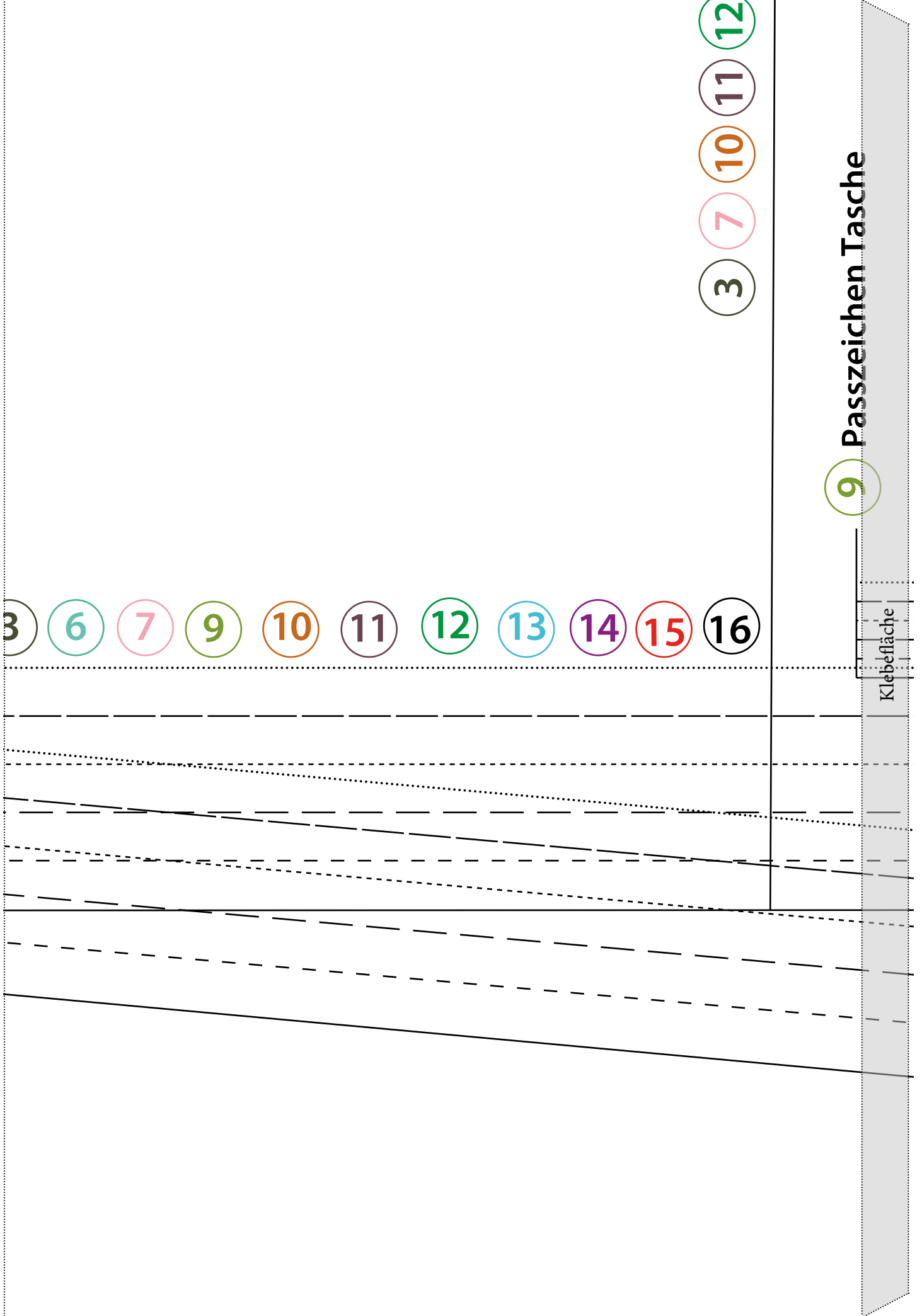
9 und 14 = × 2

3 6 7 9 10 11 12 13 14 15 16

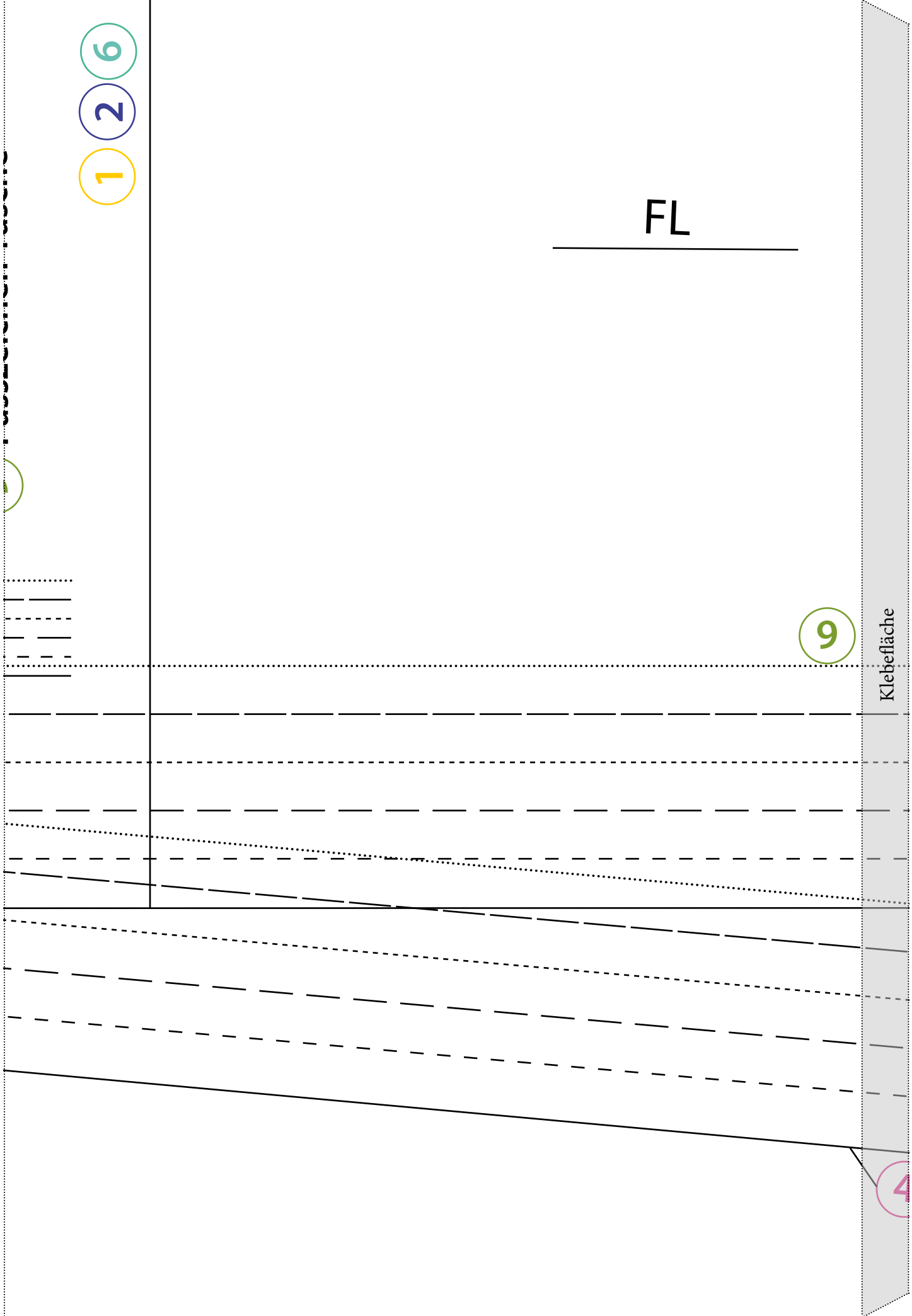
3 7 10 11 12

9 Passzeichen Tasche

Klebefläche







1 2 6

FL

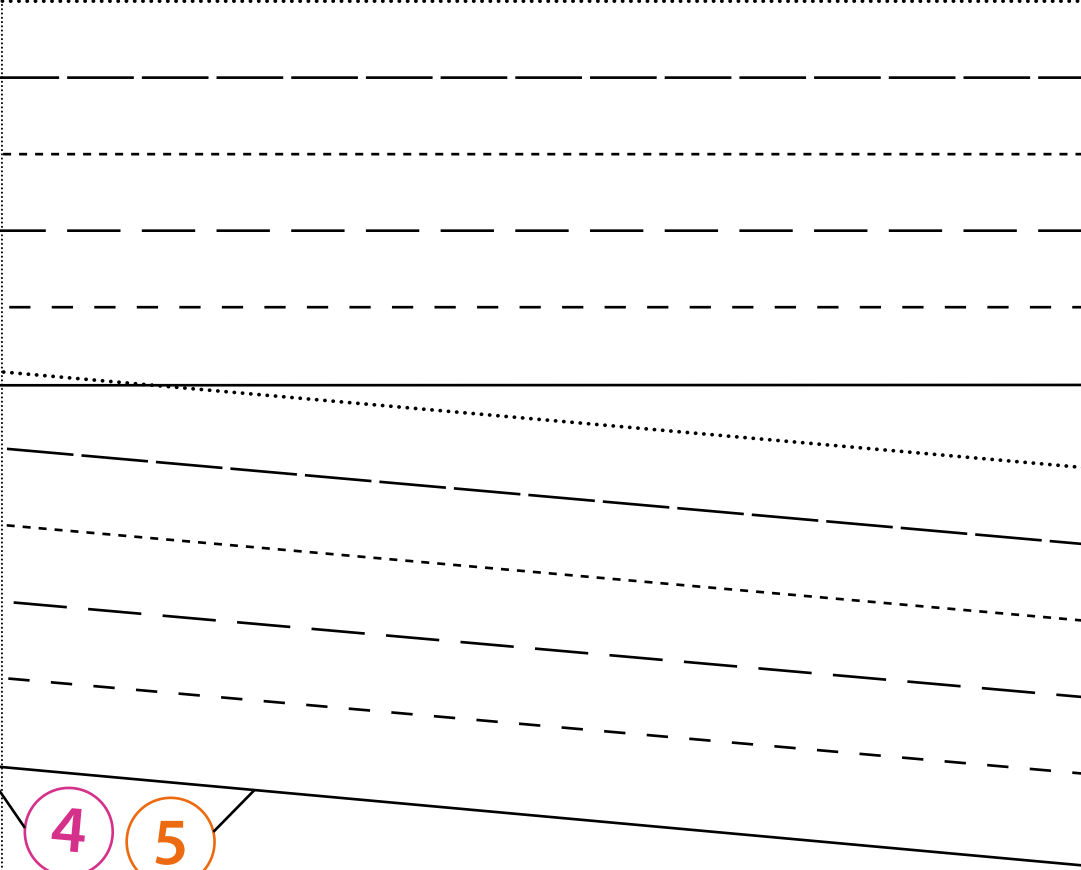
9

Klebefläche

4

5

4



4

5